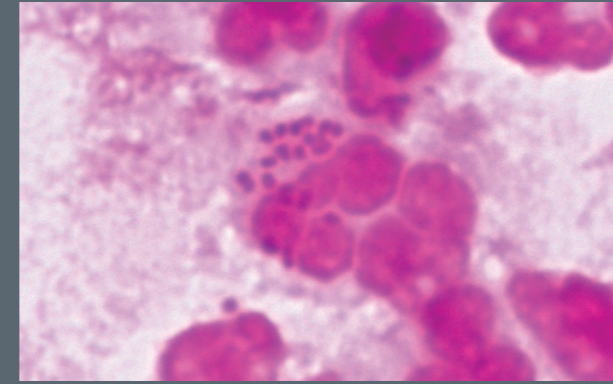
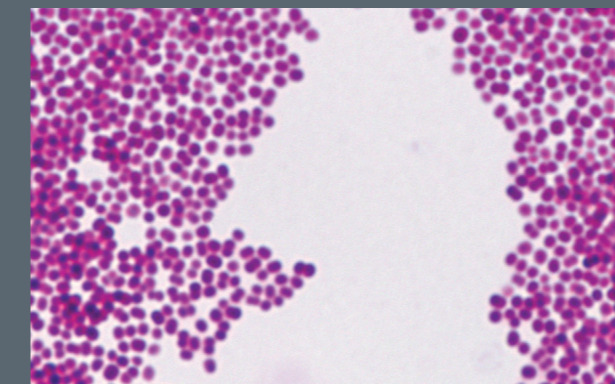


# GRAM STAINING

## GRAM NEGATIVE COCCI

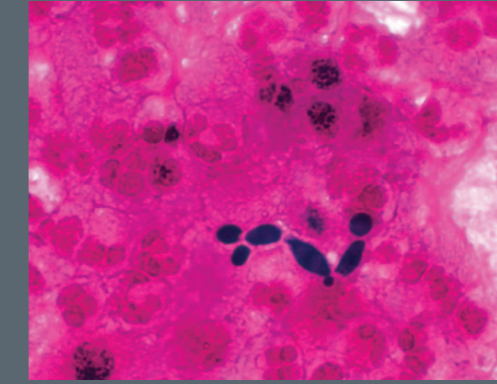


*Neisseria sp.*  
Diplococci clustered in pair or tetrad, « coffee-bean » aspect (type: meningococcus or gonococcus).



*Branhamella (Moraxella) sp.*  
Similar morphology to Neisseria.

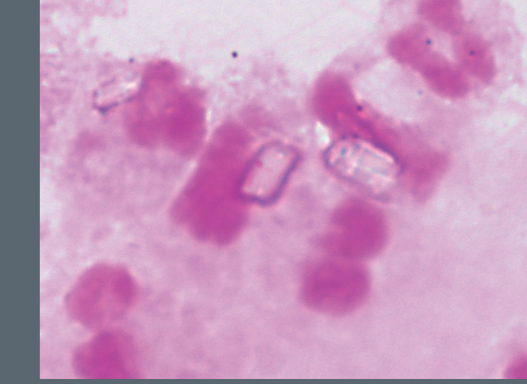
## Other aspects observed during a Gram staining



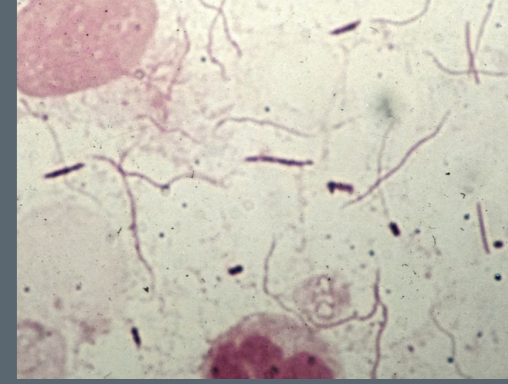
*Yeasts*  
Colored in purple by Gram staining, they may sometimes bud or produce filaments.



*Aspergillus sp.*  
Parallel-edged, partitioned and branching hyphal threads, sometimes showing a conidial head.

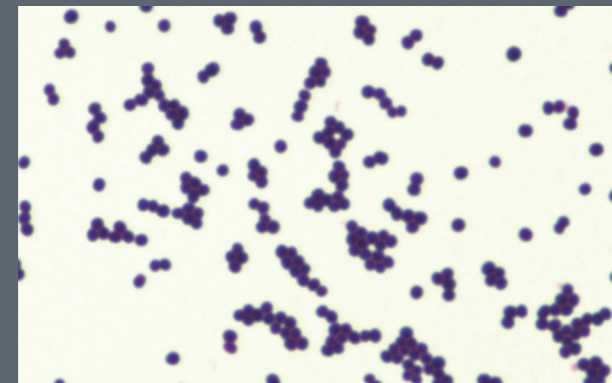


*Calcium pyrophosphate crystals*  
Small, parallelepiped and square-edged, they do not take on Gram staining.

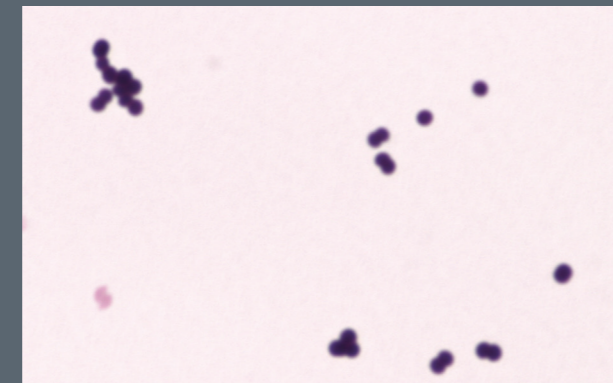


*Association of fusiform-spiral bacteria*  
Association of Gram negative spiral bacteria (spirochaete) and Gram negative fusiform bacteria *Fusobacterium sp.* Gram negative bacilli with slender ends and variable sizes.

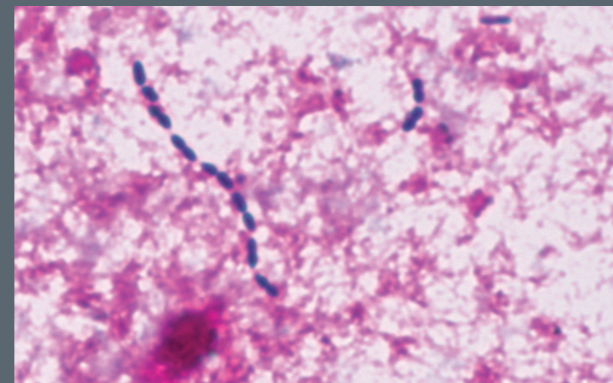
## GRAM POSITIVE COCCI



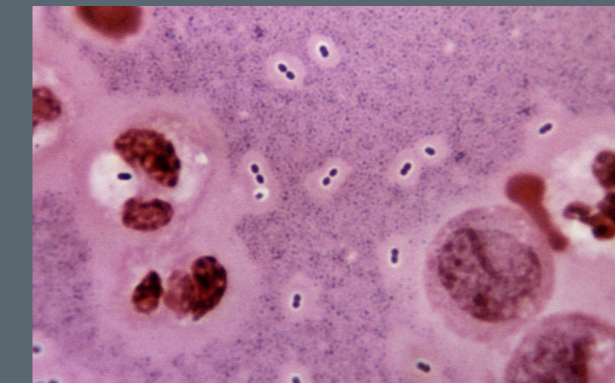
*Staphylococcus sp.*  
Small and regular Gram positive cocci of varying sizes; often clustered in "bunch of grapes" form (diplococci, tetrads).



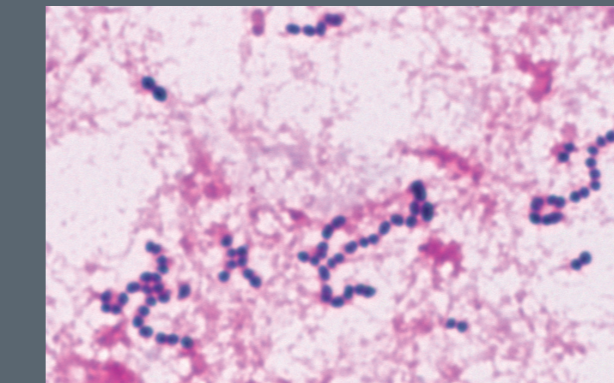
*Micrococcus sp.*  
Small cocci often clustered in pair or tetrads.



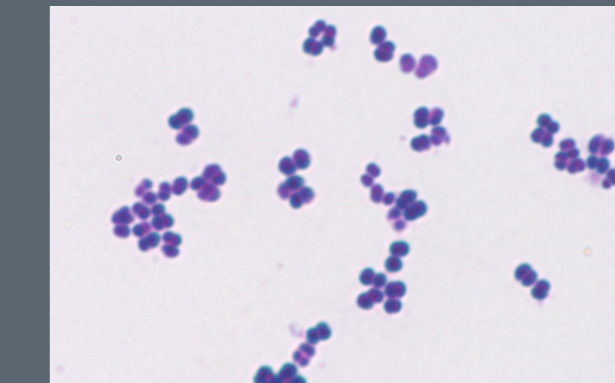
*Streptococcus sp.*  
Ovoid or elongated Gram positive cocci, sometimes positioned in small or long chains.



*Streptococcus pneumoniae*  
Ovoid or elongated Gram positive cocci, sometimes positioned in small or long chains. Often seen as slightly elongated diplococci surrounded by a capsule sometimes visible with a Gram staining.

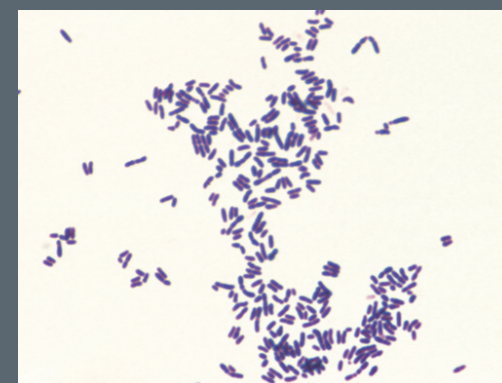


*Enterococcus sp.*  
Small cocci often clustered in pair or tetrads.



*Gemella sp.*  
Variable aspect ; type : Streptococcus or Staphylococcus

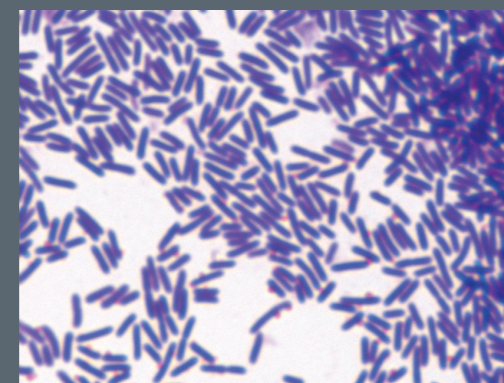
## GRAM POSITIVE BACILLI



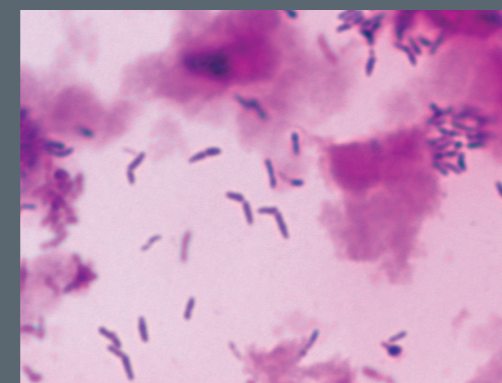
*Corynebacterium sp.*  
Small Gram positive bacilli, often clustered in various forms ("V" formation or alphabet letters)



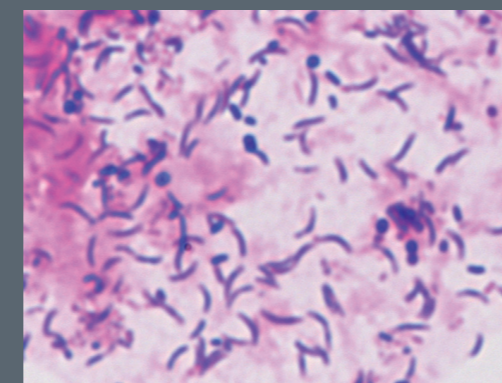
*Listeria sp.*  
Small, short and non-sporeing Gram positive bacilli



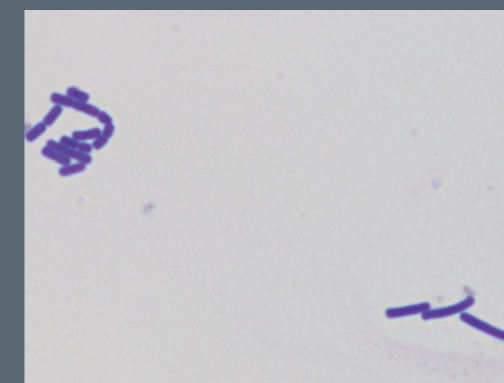
*Lactobacillus sp.*  
Long Gram positive bacilli, easily decolorized; may sometimes appear as filamentous forms.



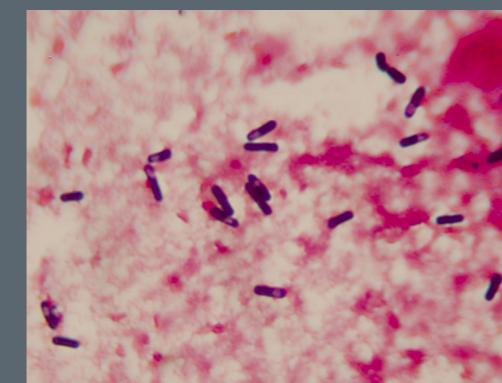
*Gardnerella sp.*  
Small pleomorphic Gram positive bacilli; easily decolorized (variable Gram) and sticking to the epithelial cells of the vagina ("clue cells" aspect).



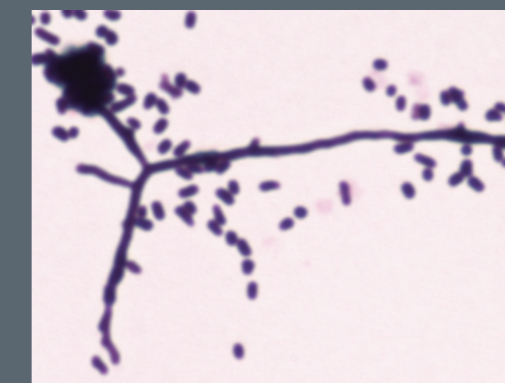
*Mobiluncus sp.*  
Small curved Gram positive bacilli; easily decolorized.



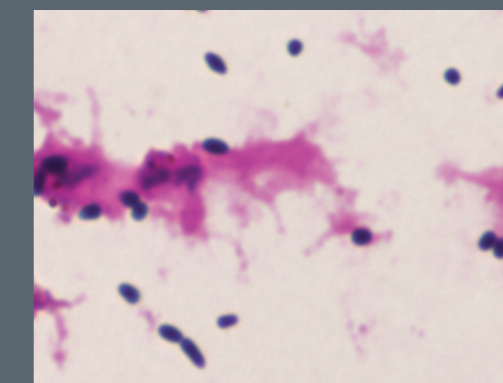
*Bacillus sp.*  
Long square-tipped -sometimes sporeing -Gram positive bacilli.



*Clostridium sp.*  
Square-tipped Gram positive bacilli presenting a deforming or non-deforming spore (central, sub-terminal, terminal).



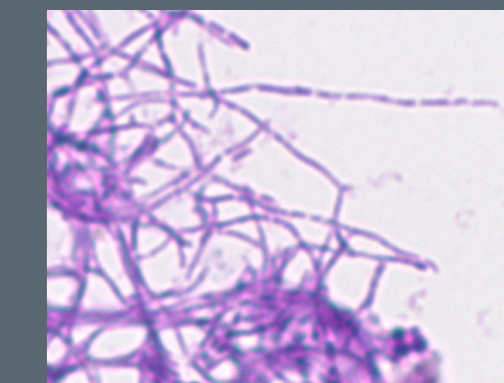
*Nocardia sp.*  
Branching and filamentous Gram positive bacilli, unevenly stained, sometimes showing a dotted aspect.



*Rhodococcus sp.*  
Encapsulated coccobacilli or short bacilli.



*Propionibacterium sp.*  
Polymorphic Gram positive bacilli of variable length; similar to *Corynebacteria*.

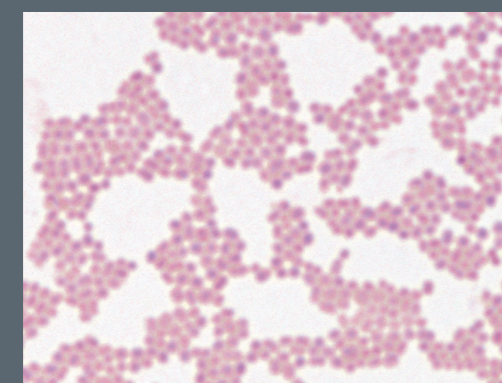


*Actinomyces sp.*  
Often filamentous Gram positive bacilli, arranged in short, branching and irregular clusters.

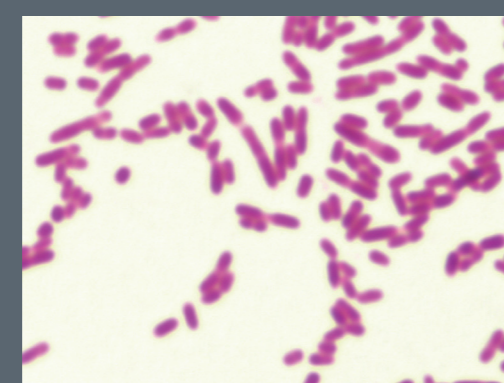
## GRAM NEGATIVE BACILLI



*Escherichia sp.*  
(Similar genus: *Proteus*, *Citrobacter*, *Enterobacter*, etc.). Straight Gram negative bacilli exhibiting a bipolar staining.



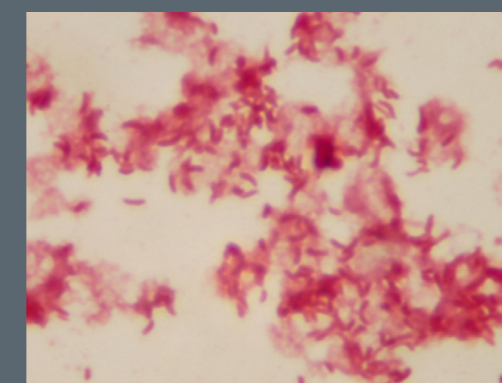
*Acinetobacter sp.*  
Coccoidal-shaped Gram negative bacilli, often improperly decolorized by Gram (suspicious or positive); round-edged and long forms that remain still in fresh preparations.



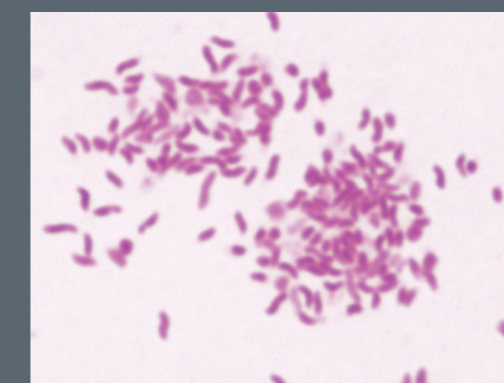
*Pseudomonas sp.*  
Thin Gram negative bacilli, exhibiting sharp slender tips; specific polar mobility in fresh preparation.



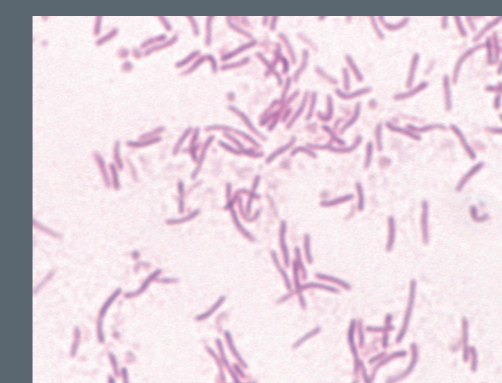
*Haemophilus sp.*  
Small encapsulated - sometimes filamentous - Gram negative bacilli.



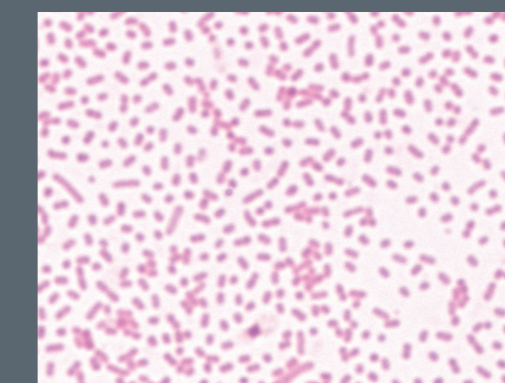
*Vibrio cholerae*  
Small, short and non-sporeing Gram negative bacilli, often curved into a "comma" shape; high mobility in fresh preparations.



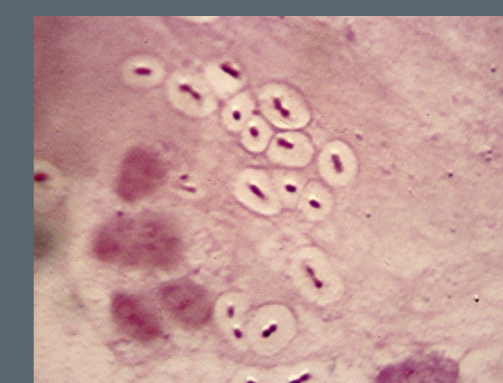
*Campylobacter sp.*  
Curved or spiral Gram negative bacilli; high mobility in fresh preparations.



*Helicobacter sp.*  
Curved or spiral Gram negative bacilli; high mobility in fresh preparations.



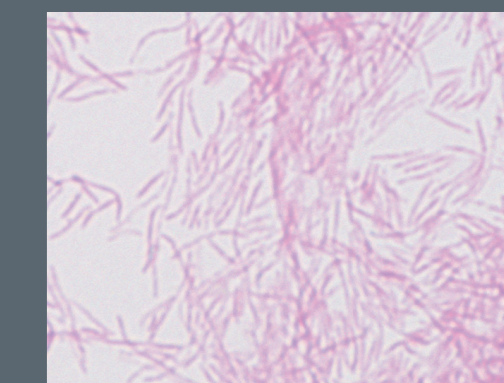
*Bacteroides sp.*  
Small Gram negative bacilli, more or less elongated, exhibiting a bipolar staining.



*Klebsiella sp.*  
Encapsulated and still Gram negative bacilli.



*Pasteurella sp.*  
Very small Gram negative coccobacilli; may be arranged in short chains.



*Legionella sp.*  
Lightly stained Gram negative bacilli.